

MILTON MATTERS

Issue No. 77

MILTON NEIGHBOURHOOD FORUM Mar 2024



The New Bransbury Park Leisure Centre?

NEXT OPEN FORUM Wed. 20 Mar 7.30pm

At Eastney Community Centre, Bransbury Park

Do Come Along, We Will Discuss:

- The new Bransbury Pool / Leisure Centre
 - Traffic and Parking in Milton
 - Plus other local news



sids

great service at great prices

Hairdressing and Barbershop

Keep in with the latest look buzz cut, fade, pompadour or colour ask for your style at competitive prices

Step into Spring with a restyle or new colour at brilliant prices

Specials available with colour treatments

Latest Hair Treatment: shiny healthy hair with Olaplex and Mon Platin hair products. Makes such a difference.



*Sids - your local friendly family salon.
We are doing our best to keep our prices friendly too!*

Mon to Sat open at 8am

**9/11 Locksway Road Milton PO4 8JN
02392 291150**

Milton Common – Volunteers, Pipits and More	5
October’s Forum Meeting: University Plans, Sea Defences and Police	9
Eastern Road Sea Defence Update	12
Milton Events Calendar / Local Art?	15
The Gas Engine House at Eastney Pumping Station	16
Defibrillators in Milton	19
Picnic on the Green – June 1 st 2024	21

Recent News & Events

Welcome New Readers Thanks to the generosity of our advertisers, we have been able to extend distribution to include houses between Milton Market and Winter Rd. So if this is your 1st issue, sorry we could not get to you sooner, we hope you find it useful. See the previous 76 issues on our website.

St James Hospital – Phase 2 The part of St James including the main Victorian hospital building, the chapel and the nearby grounds where we fought to save trees and reduce the volume of housing. Having lost that battle, we attended last month to confirm the 47 trees scheduled to be felled were correctly identified and those that were to remain were properly protected. It was sad to see them go, but the grounds had not been maintained and the beautiful parkland landscape we all wanted was lost many years ago.

St James Hospital – Phase 1 Oddly, this is the bit the NHS have still to decide how to proceed upon. We asked Gerry Overton, Senior Development Manager at Homes England (the government agency tasked with selling the land) and he said, “In terms of progress with the site, we are still in discussions with respective developers with the aim of finalising contracts in the near future.” - watch this space or come along to a Forum meeting for the latest news.

St James Green – Tree Carvings We hoped to get the stumps of 2 felled Holm Oaks carved into community sculptures but sadly, they were too diseased. Where else would you like to see community sculptures or art in Milton?

Gilberts Sweet Shop Sadly, Margaret Gilbert has passed away recently. She was a truly wonderful woman and both herself and her husband Brian (who passed away a few years ago) ran Gilberts sweetshop for a very long time. I am sure many of us have fond memories with friends and family visiting Gilberts sweet shop and how they always had time for a chat!

Next Forum Meeting Do make time to attend our next Forum – we are all busy but this is important. We plan to talk about the proposed swimming pool in Bransbury Park and, traffic, congestion and parking across the whole of Milton. We know both topics generate strong feelings and this is your chance to understand the options and what we can do. Details on front cover.

A.T PLUMBING & HEATING

Free & Friendly Quotations

All Aspects of
Plumbing Undertaken:

Bathrooms

Kitchens

Boiler Changes

Full Heating Systems to Leaks

NO JOB TOO BIG OR SMALL

Mob: 07795 842561

Tel: 02392 785929



Milton Common habitat conservation

Many local residents may have noticed over the last decade and before, the gradual march of bramble across our beloved local open space, Milton Common. As is widely known, this plant provides a great nesting ground and hidey-hole for wildlife as well as offering an influx of food over the fruiting season. But it is possible to have too much of a good thing.



Large Skipper butterfly, along the Eastern Road boundary summer 2023.

Without control the bramble will eventually march across and conquer the majority of the land, and every step reduces the Commons capacity to support wildlife. A linked mosaic of habitats is needed to support not just the largest, but most varied community of species. A good analogy for the current ratio on the common could be a hotel with plenty of beds, but no breakfast for many of the rooms.



Pyramidal Orchids peeking through summer

If you ventured onto the Common in perhaps the not-so distant past, you may have been fortunate enough to hear skylarks as they danced in their peculiar parachute. Unfortunately, this can no longer be heard. With the increase in human visitors and the ever-decreasing size of the grassland pushing the two closer and closer, this population has been lost except in memory. Any skylark passing by flits away towards more welcoming spots, on perhaps Portsdown Hill or the Marshes.

All habitats need balance and since no one seems to have spotted any wild cattle or deer roaming the wilds of Milton Common, people need to step in to fill the ecological void.

Management has already started to push back and perhaps one day we'll hear Skylarks here again and will be able to keep hold of the Meadow Pipits,

YOUR LOCAL FAMILY LAW SOLICITOR



RUTHERFORD SOLICITORS



Specialist Quality Mark holder

257 MILTON ROAD
PORTSMOUTH PO4 8PQ
Tel: 02392 735700

www.rutherfordsolicitors.co.uk

WE SPECIALISE IN FAMILY LAW

LEGAL AID ADVICE AND HELP IS AVAILABLE IN FAMILY LAW INCLUDING CHILDREN, CARE PROCEEDINGS, DOMESTIC VIOLENCE, DIVORCE, FINANCIAL MATTERS ETC.

THEREFORE, IF YOU ARE ELIGIBLE YOU MAY QUALIFY FOR FREE LEGAL ADVICE.

STRAIGHTFORWARD WILLS AND LASTING POWER OF ATTORNEYS (T&C's apply)

Straightforward Individual Will: **£165.00 + VAT**

Straightforward Joint/Mirror Will **£265.00 + VAT**

Lasting Power of Attorney (property AND health) - **£395 + VAT**
(excludes registration fee) – (usual price £750 + VAT)

Please telephone us or call in to the office for further details.

which are also slowly disappearing from sight.



Volunteers having successfully reopened an old glade winter 2023.

Following the appointment of a Countryside Officer to Milton Common in the Summer of 2022, a conservation volunteer group has formed and is meeting weekly. Fuelled on tea and biscuits they have spent the autumn and winter months pushing back against the tide of bramble, and during the summer getting to grips with botany. By identifying the current flora and distribution across the Common, species changes can be monitored over time.



Volunteers getting to grips with grass ID skills spring 2023.

The planned continuation of scrub reduction across the common will be part of the habitat management on site into the future and will allow for the re-expansion and improvement of the grassland. Gradual increases in the plant diversity will benefit many invertebrates, birds, bats and small mammals on site.



Chalkhill Blue butterfly, blown in after a summer storm 2023.

When you next take a wander around this wonderful open space have a look around and see if you can spot where the volunteers have been lately, or perhaps a plant or creature you've never noticed before.

Donna Cook

Countryside Officer
Portsmouth City Council



MILTON COMMON CONSERVATION VOLUNTEERS

**Volunteers needed to
join in. Improving and
maintaining the habitats
of Milton Common for
wildlife**

EVERY FRIDAY
MORNING AT 10AM



FOR MORE INFORMATION PLEASE CONTACT
PARKS@PORTSMOUTHCC.GOV.UK

www.portsmouth.gov.uk/milton

Milton NF Open Meeting Notes (10/10/23)

Dan Johnson, police inspector covers Eastney to Gunwharf. He has a team of nine PSOs and Rachel Teal looks after the Milton patch. “We have a cracking relationship with the city’s Community Safety team and have been busy during the summer around the Common, Old Portsmouth, and The Pier. We deal with recurring issues; problem solve and reduce risk.”

Questions included: Traffic monitoring the roundabout at the top of Locksway Road; Parking over the X-hatching on Locksway road and at Edenbridge Road; We would like more attention to thefts and damage to vehicles and more PSOs on the streets.

Responding Dan said there are competing demands, we have problems with large groups of kids causing trouble. We are trying to step up on stealing. Shoplifting is a big issue but in 2013 our numbers were cut from nearly 4,000 to less than 3,000 and subsequently we put the onus on the large supermarkets to manage their risk. We have action days to promote what we are doing. We have targeted hi-risk issues including drug related crime.

Tahir Ahmed the Estates Director of the University of Portsmouth is new to Portsmouth and said he was getting used to how it works and what a beautiful place it was. ‘I am taken aback when I am surrounded by water.’

Langstone campus closed in 2018 because students wanted to live closer to the city. Five years on and changes in government policy have seen private landlords leaving the student sector. Additionally, newly built student accommodation in the city is expensive. There is now a shortage of suitably priced student accommodation. “We are addressing the situation by refurbishing the three large residential blocks to the north of the site. These will provide 258 decent quality sustainable single units and it is hoped that students can be in residence early in 2024. There is a long-term future for the campus as the student population increases toward 2030.”

We are installing modern LED lighting and introducing new security including CCTV.

One of our artificial hockey pitches is being upgraded and will have FC accreditation and PFC will use it for their development leagues. It will also host American Football and Rugby and be opened to local clubs.

There will be no extra parking spaces instead we will enhance our bus service targeting it at the times of high usage. We are also looking at asking schools if they want to share our bus service.

Barnards Tower is to be used as the power centre for the campus.



LAWSON ROSE

**PORTSMOUTH & SOUTHSEA'S AWARD
WINNING ESTATE AGENT**

SALES & LETTINGS

131 Winter Road, Southsea, P04 8DS

02392 367 779

contactus@lawsonrose.com

lettings@lawsonrose.com

www.LawsonRose.com

The meeting was happy to hear that the campus was back in use and Tahir said he was happy to return with updates.

[Amy Conway](#) is the assistant project manager for Phase 4 of the North Portsea Coastal scheme which extends 2.4 miles along the Eastern Road protecting 4,000 dwellings, businesses, and the railway line in this low-lying area of Portsea Island. The design aims to create improved habitats and the public spaces.

Textured rubber moulds produce an indented seaward facing surface which encourages tidal pooling and subsequent growth will give something back to the foreshore's threatened eco system. It also limits temperature fluctuations, and this groundbreaking approach has generated interest within the industry. Potato starch grids will establish the growth of eel grass, again helping offset losses to the saltmarsh environment plus an offshore island will provide a resting place for Brent Geese at high tide.

Three areas of wall are constructed of flood glass.

On the landward side a 2.4m wide path of breathing gravel will provide a lovely harbourside walk and improve connectivity to the city for walkers and cyclists. The embankment at Kendall's Wharf has been planted with saplings and bee friendly flowers, bee posts and bee holes.

We are moving forward with the Ports Creek earth embankment rock revetement despite a £6M funding gap. In response to questions:- the northern part of the common will revert to grassland.

Six trees killed by salt water are to be replaced by the contractor who will be responsible for the sapling's maintenance for two years then their care falls to Parks dept. Trees opposite Morrisons were felled because they were on the line of the new sea defences. It was noted that topsoil spraying was not a sustainable approach and that was noted for the future.

The Milton phase had an environmental survey undertaken has that happened here and will the public be able to see the results? Yes, and yes.

Bait digging? The project cannot advertise access to the foreshore (slippery) but there are egress points.

If Aquind is granted permission, they would have to bear the costs if the embankment at Kendall's Wharf had to be re-instated.

A wider issue was that without an initiative-tackling climate change policy the new defences would fail.

Amy signed off saying that hopefully when you read this, you have already enjoyed walks along the new defences.

Patrick O'Hara, Secretary

North Portsea Coastal Scheme

The **North Portsea Coastal Scheme** covers a total of 8.4 km of coastline from Tipner through to Milton and is being delivered in 5 phases. Phase 4 at Eastern Road commenced in autumn 2020, covers 2.4 km of seafront, from Kendall's Wharf to Milton Common and is currently planned to be completed in late summer 2024.

Phase 4 - Eastern Road

As you may know, work pauses over the winter months as there are large numbers of several bird species that migrate through and overwinter in the Solent, which are protected by a series of designated sites, including Langstone Harbour.



Whilst pausing all work close to the sea from October, some landscaping work has been ongoing. If you have passed the site recently, you may have noticed that more trees and wildflower areas have been added and first green sprouts can already be seen.

Some areas have been opened to the public early, for residents to enjoy during the winter break.

Whilst the work completed so far in this area is safe to use and presents a fully functioning sea defence, please note that this is **not** the finished product.

When returning for construction in April 2024 work will include...

- Completion of the last 200m (approx..) of sea defence wall between the Langstone Harbour Viewing car park to Tangiers Road, including a fourth set of stairs.
- Raising of remaining areas along the wall to ensure a 1.2m height when walking along the wall.
- Further landscaping, wildflower seeding and planting of more trees - over 200 new trees will have been planted in this phase when completed in 2024.

- Completion of all planned seating areas with benches, tables and way finders and finally the return of the Langstone Harbour Viewing car park back to its use as a (viewing) car park.



There are also plans to officially open **phase 4** in late summer 2024 - followed by a little naming ceremony for 'Cockleshell island' where we invite all four winners of the naming competition.

Phase 5 - Ports Creek

Planning approved!

The planning application for the final phase of the North Portsea Coastal Scheme at Ports Creek has been given planning permission.

Portsmouth City Council's planning committee voted unanimously in their planning meeting on 31 January to approve the next stage of work.

The planned design is very similar to the completed Phase 1 design at Anchorage Park. It consists of an earth bund providing the required flood defence level and a rock armour toe towards the water. As this phase will be carried out in an area known for its green open spaces, the focus will be on retaining the natural feel by planting more trees, improving paths, and creating more access to the coastal path along this frontage.

Watch an illustrated flyover for the planned design at phase 4 using this QR code:



For more information visit coastalpartners.org.uk, email npcs@portsmouthcc.gov.uk or follow the North Portsea Coastal Scheme on Facebook.



ANGUS TREE SERVICES LTD

OUR RANGE OF COMMERCIAL TREE SERVICES INCLUDE:

Tree felling	Hedge trimming
Tree thinning	Hedge reduction
Limb removal	Deadwood removal
Site clearance	Regular tree/site maintenance
Stump removal	Hazardous tree/limb removal
Crown thinning	Emergency call-out service
Crown reduction	

We offer a friendly and professional service covering all aspects of tree care. All work BS3998 2010 Standard, full trade waste license, fully insured for £10 million, all staff are DBS checked.

07775 764 669

@angustreeservices

www.angustreeservices.co.uk

bob@angustreeservices.co.uk

CALL FOR A FREE QUOTE

Public Art in Milton

Two Holm Oak trees were felled late last year as they were diseased and branches were falling onto parked cars – they were in the corner of the Green at St James overlooking Fair Oak Road (do we need to change the road name now? 😊).

If you wondered why they took so long to clear and replant, it is because we looked into getting the stumps carved into animals or similar. Sadly, they were not suitable but we are looking for other sites for public art in Milton – what would you put where?



We have our fair share of wall art but if you draw a line from QA to South Parade, all the city's sculptures seem to be on the other side from us, apart from Jimmy Dickinson at Fratton Park.

Is that how it should be or would you like to see more on this side of the city? What would you like to see and where? Come to a forum

meeting and tell us, send us an email or post something on Keep Milton Green on Facebook.

Milton Calendar - 2024

Wednesday Mar 20th 7.30pm-9.00pm Milton Open Forum,
Eastney Community Centre, Bransbury Park

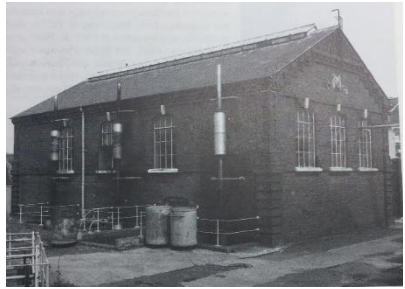
Sat June 1st Noon-5pm Milton 'Picnic On The Green'
Milton Green, St James Hospital, Locksway Road

Add Your Local Event Here....

THE 1904 GAS ENGINE HOUSE SEWAGE PUMPING STATION

The Eastney Gas Engine House (EGEH) is a unique historic building. Part of PCC's Museum service, it is run by local volunteers. It's open for visitors every Wednesday morning between 10am and noon and the last Sunday of every month (except December) from 10am to 4pm. Entry is free.

The EGEH is special because it houses unique pumping engines which are the only ones of their type in the world still in motion. Not to be confused with the steam driven beam engine house nearby. Interested? Come along and have a look. Better still, come along and volunteer. No special skills needed apart from an interest in Portsmouth's past and the ability to drink tea and eat doughnuts!!!



Situated in the parish of Milton, built in 1904 and held in reserve until 1971 for storm water surges after the new electric pumps were installed next door in 1923. Grade II listed in 1973, now part of our industrial heritage, the engines are maintained and presented to the public by volunteers.

Portsmouth's population almost doubled from 112,954 in 1870 to 190,000 in 1900. Disposal of waste and storm water was a big problem.

The Town Council Drainage and Sanitation committee met in March 1900 and Sir William Pink introduced the question of borough drainage. He proposed three schemes, two dealt with getting rid of storm water and one dealt with the sewage problem among to relieve the sewers in Southsea.

The latter scheme proposed a new pumping station to the west of the existing one with gas engines able to deal with 2¾ million gallons of sewage an hour. Sewage conveyed via a new 42-inch diameter rising main to 4 new tanks with a capacity of 6.75m gallons alongside the existing tanks at Fort Cumberland. The new tanks constructed with 3 new outfalls 200 yards north of the 1886 tanks. The cost of this scheme was high ≈ £210,000.

With the new Naval Barracks at Portsea it would be impossible to send all the sewage through the present mains. The borough engineer said the sewage could not get through the sewer fast enough and the result was flooding in the lowest parts of Southsea. The borough surveyor told them he could prepare a scheme which will deal with the surface water.

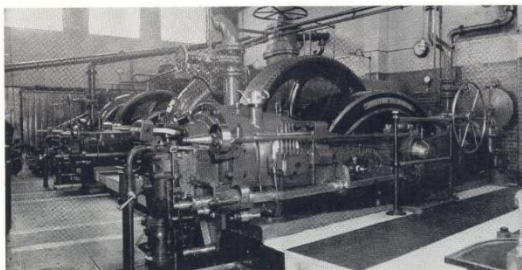
An amendment was proposed “that the opinion of an Expert be taken as to the best means of relieving the flooding in the Clarendon Road district”.

After consultation and tendering, in January 1904, the contracts for the sewer and tanks were let to Mr Bell of Tottenham and the additional pumping station with Crossley gas engines and centrifugal pumps to Mr W.W. Evans of Portsmouth.

Mr Evans tender for the gas house at £8,999 11s 10d was the lowest and accepted. (£9000 in 1904 is ≈ £1,371,422 today)

The choice of Crossley gas engines was based on the success of the 10hp Crossley gas installed at the Stamshaw Pumping Station in 1886.

The gas plant consists of three Y2 type 180 hp (on town gas) double-ended Crossley gas engines with tube ignition. Each engine drives a 24-inch Tangye's centrifugal pump through a flexible rope coupling at a speed of 180 rpm.



The Y2 engine is 21 feet (6.4 m) long, 9½ feet (2.9 m) wide, and weighs 20¾ tons. The flywheel is 8 feet (2.4 m) in diameter and is 17 inches (43 cm) wide.

The engines were supplied by Crossley Bros. Ltd. on 22nd August 1904.

There is also an air compressing engine and a priming engine. Each pump lifts 500,000 gallons per hour. This increased the capacity of Eastney pumping station from 500,000 to 2,000,000 gallons an hour.

The engines originally ran on Town Gas and were converted to North Sea Gas in 1971. The gas supply was disconnected c2000 against the advice of the Museum service.

An external water tank for jacket cooling, 40 feet by 14 feet and 5 feet 6 inches deep (12.2 x 4.2 x 1.7 metres), is supported on piers at the side of the engine house. It has a capacity of 19,250 gallons (87,395 litres).

Ian Clark

Raising money for defibrillators in Milton

The beginning

Having attended a refresher First Aid course last year, I was reminded about the value of defibrillator use during a situation where a person is experiencing a cardiac arrest. I then investigated the statistics and local provision.

Do you know?

- When a person is in cardiac arrest the chances of survival are improved by 50-70% if a defibrillator is used within 5 minutes.
- The success rate deteriorates with each passing minute so that by 10 minutes the survival rate is 20%
- Most cardiac arrests occur in the home (72%) or workplace (15%)
- The recommendation is that a defibrillator should be readily available within 300metres of a cardiac incident to allow collection and use within 6 minutes of the person collapsing
- Public access defibrillator use is reported as being used in less than 1 in 10 of out of hospital cardiac arrests
- Where your local defibrillator is in Milton?

**STATE OF THE ART NEW ON-SITE MOT BAY - BEGINNING
OF AN EXCITING NEW CHAPTER FOR MOTOTECH**

**SPECIALIST IN PERFORMANCE & LUXURY VEHICLES -
CATERING TO ALL YOUR MECHANICAL NEEDS!**

CALL OR ENQUIRE

EMAIL -

MOTOTECH@LIVE.CO.UK

M.O.T ONLY £50.00



**Unit 8 Warren Avenue Industrial Estate
Warren Avenue, Milton
Portsmouth PO4 8PY**

Telephone: 023 9287 4784

My local defibrillators are at Meon Infant School which is 500m away or Eastney and Milton Allotment Shop, also 500m away. Neither are accessible to the general public 24x7.

Our Milton area is a highly populated, with more houses being developed plus visitors using sports grounds, local shops, community centres, the coastal path, and pubs.

My story In addition to the above, my personal story and impetus is that it is 40 years ago this year that my mum, Frances, died after a cardiac arrest at the age of 46. I understand she did receive defibrillation from the ambulance crew but it was too late. Therefore, rather than one or two defibrillators for Milton, I am aiming to raise money for forty for Portsmouth - yes, **Forty 4 Frankie.**



Progress so far Having identified the need and suitable equipment, I have:

- Set up a crowdfunder page for donations <https://crowdfunder.co.uk/p/forty-4-frankie>
- Identified suitable locations within our area with resident 'guardians'

What can you do? So, as I have decided to raise money for more defibrillators, **I need your help.** £4,000 would go towards 2 defibrillators with 24-hour access and for the bigger picture the full 40 defibrillators would be in the region of £80,000.

Can you donate or can you suggest a local company who would be interested in contributing to this local need?

I also need electricians who would be able to erect and arrange the power supply for a small fee or, ideally, complementary as your donation
Please

- donate to <https://crowdfunder.co.uk/p/forty-4-frankie>
- contact me if you would like more detail or if you can offer help in any other capacity

Lynn Timms
timmslynn@yahoo.co.uk



A family
Try Bowls Day

Sunday 21st APRIL

and

Saturday 27th APRIL 2024

11.00am - 3.00pm

PRIORY BOWLS CLUB

Milton Park, Portsmouth

**Come and join us to have a chat
play bowls, drink tea, coffee or
squash and eat hot dogs**

ALL FREE

Please wear flat sole shoes

Bowls can be supplied

For more details contact:

MARTIN EGGLETON, Hon. Secretary

Mobile: 07769 847264

Our Picnic This Year Will Be On The Green

At St James Hospital Again

Saturday 1st June 1-5pm



We started the picnic nearly 20 years ago in an effort to save the Green at St James for community use – we succeeded and the green is ours to use in perpetuity, so we celebrate each year by holding a picnic there.

Do join us this year if you can – bring a blanket and a picnic and join in the fun, we have Punch and Judy and bouncy castles for the youngsters, a dog show for the family pooch, childrens races and lots of demonstrations and stalls from many, many local groups and businesses. We also have our own cake stall, tea, coffee etc and a tombola which gives us the funds to carry on supporting community events such as this.

Remember, this is a community event run by the people of Milton for the benefit of local people. If you can spare an hour to get involved on the day or before, or have an idea to make it better, we would love to hear from you.

This Event Will Be As Good As You Make It!

Can You Help? Please do...

miltonneighbourhoodforum@gmail.com

GUIDE TO LOCAL SERVICES IN MILTON

DIPEST PEST CONTROL LIMITED

All types of pest eliminated – No more than £50
Mr Simon Houghton MD, MRIPH, IMIFM, MBPR (Pest Control)
Field Biologist
Hope House, 19 Revenge Close, Southsea, PO4 8YE
PHONE (023)9235 8692 MOBILE 07748 791 248
dipestpestcontrol@ntlworld.com

Home based brow and beauty business in Milton. Services include microblading, henna brows, HD brows, facial waxing, brow/lash tinting, lash lift and tint, dermaplaning, spa facials and Indian head massage.



Offering 10% off your first appointment when quoting this advert.
Pages on both Facebook and Instagram @thebrowartistsouthsea or call to book an appointment with Vicky on 07715986948

www.pingzone.co.uk

- PC and Laptop repairs
- Upgrades
- Networking
- Is your machine running slow?
- Mobile phone and tablet screen repairs
- Virus and Malware protection

Please contact Dave if you need any help.

02392 215 999 07944 917 293 support@pingzone.co.uk

14 Tern Walk, Milton, PO4 8QG - by appointment please

WANT TO ADVERTISE IN MILTON MATTERS?
ADVERTISING RATES Full page £100/ ½ £60/ ¼ £35
(+20% for non-Milton based)

Contact Pam Pritchard (07837 929385)

pampritchard1@outlook.com

ADVERTISING COPY IN WORD OR JPEG ONLY PLEASE

Milton Village Community Association

Milton Village Hall, 182 Milton Road, Southsea, Hants, PO4 8PR

Tel. 023 9287 3788 Email: miltonvillagehall@gmail.com

Office: 9.30am-12.30pm Mon-Fri Website: www.miltonvillagehall.co.uk

MEMBERSHIP

If you receive Milton Matters, you can become a member of our Association!

You do not have to be a member to enjoy any of the activities and trips but if you do join, you'll receive discounts and advance notification of trips and events & more! Please ask for details.

TRIPS & HOLIDAYS

Our new programme of trips & holidays for Summer 2024 & beyond is out now!

Make sure you're a member to automatically receive the programme, or pop in for one next time you're passing! The following trips for later in the year have already been advertised but still have some spaces available!

MAMMA MIA THE PARTY AT O2 Sunday 7th July 2024 - Matinee Members £160 (Non-Members £169) Inc. Coach * Welcome Drink * 4-course Meal * Tier B Seating * Disco!	DEVIL WEARS PRADA LONDON SHOW Wednesday 5 th February 2025 Members £69 (Non-Members £74) <i>Join us for this fabulous, funny musical based on the blockbuster film!</i>
DISNEYLAND, PARIS – JANUARY 2025 – Please Register Interest!	

CURRENT REGULAR ACTIVITIES at Milton Village Hall

Monday	Tuesday	Wednesday	Thursday	Friday	Sat	Sun
Music Mad	Pilates	Music Mad	Weight Watchers	Iyenga Yoga	Theatre School	AA
Curling	Adult Ballet	Bingo n Brunch (m)	Mummy & Mini Fitness	Cribbage (All levels)	Private Hire	12 Step
Seated Keep Fit	Cribbage (Experienced)	50+ Keep Fit	Home Ed Art Group	Teeny Dreamers Messy Play		Private Hire
Vinyasa Yoga	Beetle Drive (m)	Weight Watchers	Folk Band (m)	Iyenga Yoga		
Dog/Puppy Training	Iyenga Yoga	Sisters in Song (m)	Bereavement Support (m)			
	Tap Dancing	Dog/Puppy Training	Children's Ballet			
		Circle Dancing	Pilates			
			Line Dancing			

For more info or contact details for any group or class, please contact the office on 02392 873788 / miltonvillagehall@gmail.com



Like us on Facebook for latest news & info! Registered Charity 1003706

MILTON NEIGHBOURHOOD FORUM COMMITTEE

Martin Silman – Chair
Dave Willcox – Vice Chair
Martin Lock – Treasurer
Rod Bailey - Neighbourhood
Plan Chair
Patrick O'Hara – Secretary
Dan Brooks
Ian Clark
Peter Crockett

Paul Hinchliffe
Viola Langley
Lyn Mills
Peter Mills
Pam Pritchard
Reg Puntis
Paula Savage

You?

Ward Councillors – Milton

Cllr Gerald Vernon-Jackson

39 Lindley Ave.,
Southsea
(02302 834551)
geraldvj@gmail.com

Cllr Kimberly Barratt

C/o Members' Services Floor 3
Civic Offices, Guildhall Sq.,
PO1 2AL (07447904224)
cllr.kimberly.barrett@portsmouthcc.gov.uk

Cllr. Steve Pitt

C/o Members' Services as above
(023 9283 4936/ 07966 763635)
Cllr.Steve.Pitt@portsmouthcc.gov.uk

Ward Councillors - Baffins

Cllr Leonie Oliver

C/o Members' Services Floor 3,
Civic Offices, Guildhall Sq.,
PO1 2AL (07823 804896)
cllr.leonie.oliver@portsmouthcc.gov.uk

Cllr. Darren Sanders

Flat 6, 92 Victoria Road North
Southsea, PO5 1QE
(07740 680612)
darrensanders59@gmail.com

Cllr. Abdul Kadir

c/o Members Services as above
(07826 534614)
Cllr.Abdul.Kadir@portsmouthcc.gov.uk

Neighbourhood Planning Forum website <http://miltonplan.org.uk>

Contact Us: miltonneighbourhoodforum@gmail.com

Supported by



Portsmouth
CITY COUNCIL

The Neighbourhood Forum is responsible for editorial content, design and distribution of Milton Matters.

*Printed by Holbrooks Printers
Norway Road, Portsmouth*